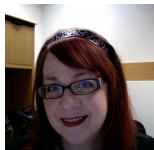


## Pamela L Shaw

---



### **Pamela L. Shaw, MSLIS, MS (Computational Biology & Bioinformatics)**

Biosciences & Bioinformatics Librarian  
NIH Public Access Compliance Reporter (PACR)  
Ward 1-285  
Phone: (312) 503-8689  
Email: [p-shaw2@northwestern.edu](mailto:p-shaw2@northwestern.edu)

 [orcid.org/0000-0003-3698-1608](https://orcid.org/0000-0003-3698-1608)

As Biosciences & Bioinformatics Librarian, I apply my research background to support basic science research at the Feinberg School of Medicine. A former lab technician with almost 20 years of bench experience, I understand the process of scientific research and publication.

I have also received specialized training and education in computational biology and bioinformatics. I provide assistance with molecular biology, genetics, bioinformatics and science information tools.

I also serve as the NIH Public Access Compliance Reporter for Northwestern University. Contact me with any questions regarding PMCIDs for your NIH-funded manuscripts.

Contact me to set up training and education for your staff, faculty and graduate students in your department, center or laboratory.

---

## Bioinformatics and Data Management Support and Collaboration

I also partner with basic sciences faculty and researchers to provide timely access to relevant data and literature resources.

Services include:

- Visiting departments to alert users of new resources
- Directing users to appropriate resources
- Creating subject and program based resource guides
- Scheduling workshops by experts on the use of bioinformatics databases and other research tools

Biosciences and bioinformatics guides:

- [Genome Browsers - The Ensembl Genome Browser](#)
  - [Genome Browsers - The UCSC Genome Browser](#)
  - [Sequence Similarity Searching](#)
  - [Gene Set Enrichment and Pathway Analysis](#)
- 

## NIH Public Access Policy Compliance

As the NIH Public Access Policy Compliance Monitor Role (PACR) for Northwestern University, I support researchers and their staff with issues regarding compliance with the NIH Public Access Policy. These issues include:

- Managing publications with MyNCBI's "My Bibliography"
- Depositing papers to PubMed Central through the NIH Manuscript Submission (NIHMS) system
- Dealing with journal publishers to request deposit of manuscripts to PubMed Central or NIHMS
- Formatting biosketches in accordance with the NIH new biosketch format and using the MyNCBI SciENcv biosketch tool

See my [Galter Library guide to the NIH Public Access Policy](#), or contact me for assistance.

---

## Liaison Areas

Departments

Centers & Institutes

Programs

- Biochemistry & Molecular Genetics
- Cell & Molecular Biology
- Microbiology-Immunology
- Molecular Pharmacology and Biological Chemistry
- Pathology
- Physiology
- Biostatistics Collaboration Center
- Center for Genetic Medicine
- Institute for Augmented Intelligence in Medicine
- Institute for Bionanotechnology in Medicine
- Mesulam Center for Cognitive Neurology and Alzheimer's Disease
- Northwestern University Clinical and Translational Sciences Institute (NUCATS)
- Northwestern University Institute for Neuroscience (NUIN)
- Parkinson's Disease and Movement Disorders Center
- Genetic Counseling Graduate Program
- Interdepartmental Biological Sciences Graduate Program (IBiS)
- Walter S. and Lucienne Driskill Graduate Program in Life Sciences (DGP)
- Medical Scientist Training Program (MSTP)
- Northwestern University Institute for Neuroscience (NUIN)
- Master of Science in Epidemiology and Biostatistics

As your liaison librarian, I can help you:

- search bibliographic databases (Web of Science, Scopus, MEDLINE)
- select specialized nucleic acid, protein and genome databases
- organize your citations with EndNote
- organize and prepare grant materials in a manner compliant with the NIH Public Access Mandate

Do you need help finding the pig homologue for human tau protein?

Do you need an open-source molecular modeling program?

Do you need to know how to cite GEO DataSets?

Do you need to know how and when to include the PMID in your grant bibliographies?

I can help you with questions like these, and many more.

## Publications - Manuscripts

- Fort DG, Herr TM, Shaw PL, Gutzman KE, Starren JB. Mapping the evolving definitions of translational research. *J Clin Transl Sci.* 2017; 1(1):60-66. PMID: [PMC5408839](#)
- Clare SE, Shaw PL. "Big Data" for breast cancer: where to look and what you will find. *NPJ Breast Cancer.* 2016; 2: 16301. PMID: [PMC5289822](#)
- Xu J, Rasmussen LV, **Shaw PL**, Jiang G, Kiefer RC, Mo H, Pacheco JA, Speltz P, Zhu Q, Denny JC, Pathak J, Thompson WK, Montague E. Review and evaluation of electronic health records-driven phenotype algorithm authoring tools for clinical and translational research. *J Am Med Inform Assoc.* 2015; 22(6):1250-60. PMID: [PMC5009915](#)
- Callese TE, Richards CT, **Shaw P**, Schuetz SJ, Paladino L, Issa N, Swaroop M. Trauma system development in low- and middle-income countries: a review. *J Surg Res.* 2015; 193(1):300-7. PMID: [25450600](#)
- Buys C, Shaw P. Data Management Practices Across an Institution: Survey and Report. *Journal of Librarianship and Scholarly Communication.* 2015; 3(2):eP1225. doi: 10.7910/DVN/ZMZ5RD.
- Callese TE, Richards CT, **Shaw P**, Schuetz SJ, Issa N, Paladino L, Swaroop M. Layperson trauma training in low- and middle-income countries: a review. *J Surg Res.* 2014; 190(1):104-10. PMID: [24746252](#)
- Feng G, **Shaw P**, Rosen ST, Lin SM, Kibbe WA. Using the Bioconductor GeneAnswers package to interpret gene lists. *Methods Mol Bio.* 2012; 802:101-12. PMID: [22130876](#)
- **Shaw PL**, Kirschner AN, Jardetzky TS, Longnecker R. Characteristics of Epstein-Barr virus envelope protein gp42. *Virus Genes.* 2010; Jun;40(3): 307-19. PMID: [PMC2854865](#)
- Lambert MP, Velasco PT, Chang L, Viola KL, Fernandez S, Lacor PN, Khuon D, Gong Y, Bigio EH, **Shaw P**, De Felice FG, Krafft GA, Klein WL. Monoclonal antibodies that target pathological assemblies of Aβeta. *J Neurochem.* 2007 Jan; 100(1):23-35.
- Grudzien A, **Shaw P**, Weintraub S, Bigio E, Mash DC, Mesulam MM. Locus coeruleus neurofibrillary degeneration in aging, mild cognitive impairment and early Alzheimer's disease. *Neurobiol Aging.* 2007 Mar; 28(3):327-35.
- Mesulam M, **Shaw P**, Mash D, Weintraub S. Cholinergic nucleus basalis tauopathy emerges early in the aging-MCI-AD continuum. *Ann Neurol.* 2004 Jun;55(6):815-28.
- Mesulam MM, Guillozet A, **Shaw P**, Levey A, Duysen EG, Lockridge O. Acetylcholinesterase knockouts establish central cholinergic pathways and can use butyrylcholinesterase to hydrolyze acetylcholine. *Neuroscience.* 2002; 110(4):627-39.
- Mesulam M, Guillozet A, **Shaw P**, Quinn B. Widely spread butyrylcholinesterase can hydrolyze acetylcholine in the normal and Alzheimer brain. *Neurobiol Dis.* 2002; Feb; 9(1):88-93.
- Elsayed MH, Hogan TP, **Shaw PL**, Castro AJ. Use of fetal cortical grafts in hypoxic-ischemic brain injury in neonatal rats. *Exp Neurol.* 1996 Jan; 137(1):127-41.
- Schulz MK, McNulty JA, Handa RJ, Hogan TP, Tillotson GL, **Shaw PL**, Zimmer J, Castro AJ. Fetal neocortical transplants grafted into neocortical lesion cavities made in newborn rats: an analysis of transplant integration with the host brain. *Cell Transplant.* 1995 Jan-Feb; 4(1):123-32.
- Schulz MK, Hogan TP, Castro AJ. Connectivity of fetal neocortical block transplants in the excitotoxically ablated cortex of adult rats. *Exp Brain Res.* 1993;96(3):480-6. doi: 10.1007/BF00234115. PMID: 7507863.
- McNulty JA, Fox LM, **Shaw PL**, Alones VE, Klausen BS, Swenson RS, Castro AJ. Pineal gland transplants into the cerebral hemisphere of newborn rats: a study of the blood brain barrier and innervation. *J Neural Transplant Plast.* 1991; 2(2):113-24.
- Swenson RS, **Shaw P**, Alones V, Kozlowski G, Zimmer J, Castro AJ. Neocortical transplants grafted into the newborn rat brain demonstrate a blood-brain barrier to macromolecules. *Neurosci Lett.* 1989 May 22; 100(1-3):35-9.

## Conference Presentations

- **Shaw PL** & Buys CM. Disciplinary perceptions of data and data management practices. Poster presentation. Medical Library Association annual conference. Austin, TX. May 2015.
- **Shaw PL**. From talking dogs to personalized medicine: The weird and wonderful history of inheritance and pharmacogenomics from pups to people. Medical Library Association annual conference. Austin, TX. May 2015.
- **Shaw PL** & Buys CM. When "How hard can it be?" becomes "a Sisyphean task": Framing a data-sharing platform for developmental health outcomes. Paper presentation. Medical Library Association annual conference. Austin, TX. May 2015.
- **Shaw PL**, Buys CM, Paris JM. Powerful partners make E-Science & data management a success. Paper presentation. Medical Library Association annual conference. Austin, Tx. May 2015.
- **Shaw PL** & Buys CM. Disciplinary discrepancies in perceptions of data and data management practices. Poster presentation. VIVO / Science of Team Science(SciTS) annual conference. Austin, TX. August 2014.
- **Shaw PL**. Evolution of the librarian as superhero. Paper presentation. Medical Library Association annual conference. Chicago, IL. May 2014.
- **Shaw PL**, O'Dwyer L. Building a better translational researcher: The library's role in training the clinical and translational investigator. Paper presentation. Medical Library Association annual conference. Chicago, IL. May 2014.
- **Shaw PL**, Adams SM, Buys CM. The power of the library in team science. Poster presentation. Science of Team Science(SciTS) annual conference. Evanston, IL. June 2013.
- **Shaw PL**. Taking translational science to the community: Working with community-engaged health research organizations. Paper presentation. Medical Library Association annual conference. Boston, MA. May 2013
- **Shaw PL**. Genomic literacy: How much is enough? Panel presentation. AAAS/Science reception and panel discussion: Genomic Medicine, Personalized Genomics, and Genomic Literacy: Contributions from Health Science Libraries. Medical Library Association annual conference. Seattle, WA. May 2012.
- **Shaw PL** and Lin SM. Developing standards for sequencing methods reporting. Poster presentation. Medical Library Association annual conference. Seattle, WA. May 2012
- Falk-Krzesinski H, Wimbuscus-Yoon L, **Shaw PL**. Comparative matrix of research networking tools. Poster presentation. VIVO annual conference. New York, NY. August 2010.
- **Shaw PL**. Too many fish and no fishing pole: Building a taxonomy for discovery of instruments for the national CTSA federated website. Paper presentation. Medical Library Association annual conference. Washington, DC. May 2010.
- **Shaw PL**, Shedlock J, Longnecker R. The virology bioinformatics librarian: A year in the life of an embedded NLM Informationist Fellow. Paper presentation. Medical Library Association annual conference. Honolulu, HI. May 2009.
- **Shaw PL**, Flatow J, Lin S. g3p: the Google Gadget Gateway to PubMed. Poster presentation. Special Libraries Association annual conference. Seattle, WA. June 2008.
- **Shaw PL**. Protein tools for viral research. Poster presentation. Special Libraries Association annual conference. Denver, CO. June 2007

---

## Awards

- National Library of Medicine Individual Fellowship in Informationist Training: Developing Skills in Research Bioinformatics. July 1, 2007 - June 30, 2009

---

## Classes Taught

- [EndNote](#)
- [The Ensembl Genome Browser](#)
- [Genome Browsers - The UCSC Genome Browser](#)
- [NIH Public Access Policy and Publication Management with My NCBI](#)
- [Sequence Similarity Searching](#)

---

Printed: Monday, June 24, 2024 6:49 PM

Source: <https://galter.northwestern.edu/staff/pamela-shaw.pdf>