

## Staff

---

### Departments

Visit individual department pages for more information:

- [Access Services](#)
- [Administration](#)
- [Collection Management and Metadata Services](#)
- [Digital Systems](#)
- [Research and Information Services](#)
- [Research Assessment and Communications](#)
- [Special Collections](#)

---

### Staff Directory



**Matt Baumann**

- [Digital Systems](#)
- Developer
- 312-503-0421
- [Email Matt](#)



**Molly Beestrup**

- Head, [Research Information Services](#)

- Education and Curriculum Coordinator
- 312-503-4508
- [Email Molly](#)
- [Professional Profile](#)



**Mark Berendsen**

- [Administration](#)
- Deputy Director
- 312-503-1916
- [Email Mark](#)
- [Professional Profile](#)



**Natasha Bowman**

- [Access Services](#)
- Library Assistant, Interlibrary Loan
- 312-503-1911
- [Email Natasha](#)



**Amelia Bucek**

- [Administration](#)
- Evaluator | [NURTURE](#) Program
- 312-503-3229
- [Email Amelia](#)
- [NUCATS](#)



**Matt Carson**

- Head, [Digital Systems](#)
- Senior Research Data Scientist
- 312-503-5321
- [Email Matt](#)
- [Professional Profile](#)



## Bart Davis

- Head, [Collection Management and Metadata Services](#)
- Electronic Resources Librarian
- 312-503-4035
- [Email Bart](#)



## Josh Elder

- [Research Assessment and Communications](#)
- Library Assistant
- 312-503-8127
- [Email Josh](#)



## Mahonry Estrada

- [Collection Management and Metadata Services](#)
- Library Assistant
- 312-503-1204
- [Email Mahonry](#)



**Rebecca Flores**

- [Administration](#)
- Administrative Assistant
- 312-503-8133
- [Email Rebecca](#)



**Emma Florio**

- [Special Collections](#)
- Archives & Research Specialist
- 312-503-8125
- [Email Emma](#)



### **Violet Fox**

- [Collection Management and Metadata Services](#)
- Cataloging and Metadata Librarian
- 312-503-6020
- [Email Violet](#)



### **Christina Gattone**

- [Research Assessment and Communications](#)
- Research Impact Librarian
- 312-503-0892
- [Email Christina](#)



## Pearl Go

- [Digital Systems](#)
- [GREI Data Librarian](#)
- 312-503-3623
- [Email Pearl](#)
- [Professional Profile](#)



## Sara Gonzales

- [Digital Systems](#)
- Senior Data Librarian
- 312-503-1209
- [Email Sara](#)
- [Professional Profile](#)



## Karen Gutzman

- Head, [Research Assessment and Communications](#)
- 312-503-8121
- [Email Karen](#)
- [Professional Profile](#)



**Ira Hardin**

- [Access Services](#)
- Library Assistant
- 312-503-8126
- [Email Ira](#)



**Keith Herzog**

- [Administration](#)
- Associate Director
- [NNLM-National Evaluation Center](#)
- Administrative Core [NUCATS](#)
- [Email Keith](#)





**Kristi Holmes**

- [Administration](#)
- Library Director
- Professor of [Preventive Medicine](#)
- 312-503-1906
- [Email Kristi](#)
- [Professional Profile](#)



**Mohammad Hosseini**

- [Preventive Medicine](#)
- Assistant Professor
- 312-503-1201
- [Email Mohammad](#)
- [Professional Profile](#)



## Verónica Hoyo

- [Administration](#)
- Executive Director
- [NNLM-National Evaluation Center](#)
- [Email Veronica](#)



## Rodney Jackson

- [Access Services](#)
- Library Assistant
- 312-503-8127
- [Email Rodney](#)



## Ramune Kubilius

- [Collection Management and Metadata Services](#)
- Special Projects Librarian
- 312-503-1912
- [Email Ramune](#)
- [Professional Profile](#)



**Katie Lattal**

- Head, [Special Collections](#)
- Special Collections Librarian
- 312-503-1913
- [Email Katie](#)



**Krystal Madkins**

- [Research and Information Services](#)
- Education & Curriculum Librarian
- 312-503-2557
- [Email Krystal](#)
- [Professional Profile](#)



**Corinne Miller**

- [Research and Information Services](#)
- Clinical Librarian
- 312-503-5459
- [Email Corinne](#)
- [Professional Profile](#)



**Gretchen Neidhardt**

- [Collection Management and Metadata Services](#)
- Metadata and Digital Projects Librarian
- 312-503-1596
- [Email Gretchen](#)



### Eric Newman

- [Digital Systems](#)
- Developer
- 312-503-9351
- [Email Eric](#)



### Denise Nunes

- [Research and Information Services](#)
- Clinical Librarian
- 312-503-4918
- [Email Denise](#)
- [Professional Profile](#)



### Lindsey O'Brien

- [Collection Management and Metadata Services](#)
- Cataloging and Metadata Librarian
- 312-503-8128
- [Email Lindsey](#)



**Erika Gisela Martinez Picazo**

- [Administration](#)
- Evaluator
- 312-503-2068
- [NNLM-National Evaluation Center](#)
- [Email Erika](#)



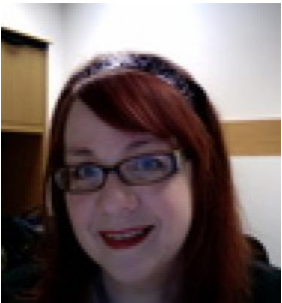
**Josh Richardson**

- [Administration](#)
- Senior Research Scientist
- [Email Josh](#)
- [Professional Profile](#)



**Austin Sharp**

- [Digital Systems](#)
- Developer
- 312-503-7074
- [Email Austin](#)



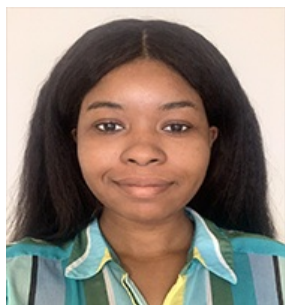
**Pamela Shaw**

- [Digital Systems](#)
- Biosciences & Bioinformatics Librarian
- 312-503-8689
- [Email Pamela](#)
- [Professional Profile](#)



## Mao Soulakis

- [Research Assessment and Communications](#)
- Research Impact Specialist
- 312-503-4989
- [Email Mao](#)



## Brooke Strodder

- [Access Services](#)
- Library Assistant
- 312-503-8126
- [Email Brooke](#)



## Steph Thor

- [Administration](#)
- Deputy Director of Administration
- 312-503-1051
- [Email Stephanie](#)





**Guillaume Viger**

- [Digital Systems](#)
- Senior Developer
- 312-503-3664
- [Email Guillaume](#)



**Q. Eileen Wafford**

- [Research and Information Services](#)
- Research Librarian
- 312-503-5294
- [Email Eileen](#)
- [Professional Profile](#)



**Wen Wang**

- [Administration](#)
- Program Evaluator
- [NUCATS](#)
- [Email Wen](#)



**Annie Wescott**

- [Research and Information Services](#)
- Research Librarian
- 312-503-0927
- [Email Annie](#)
- [Professional Profile](#)



## Emma Wilson

- [Administration](#)
- Communications Coordinator
- 312-503-4207
- [Email Emma](#)



## Sabrina Zhong

- [Access Services](#)
- Library Assistant
- 312-503-8126
- [Email Sabrina](#)



## Mary Anne Zmaczynski

- Head, [Access Services](#)
- Public Services Librarian
- 312-503-6898
- [Email Mary Anne](#)

